

What Is Hip ?

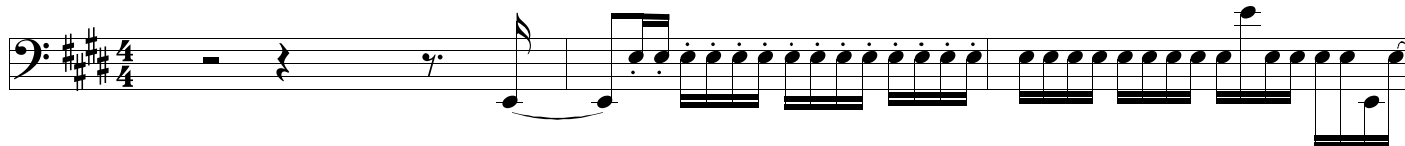
Bass Line originally played by Francis "Rocco" Prestia
Transcription by Pierre Verger, 1988
For an easier study, my advice to you is to buy the original recording

As recorded by Tower Of Power, 1973
Composer : S. Kupka / Emilio Castillo / David Garibaldi
From the Warner Bros album " Tower Of Power "

[1] ♩ = 102

[2]

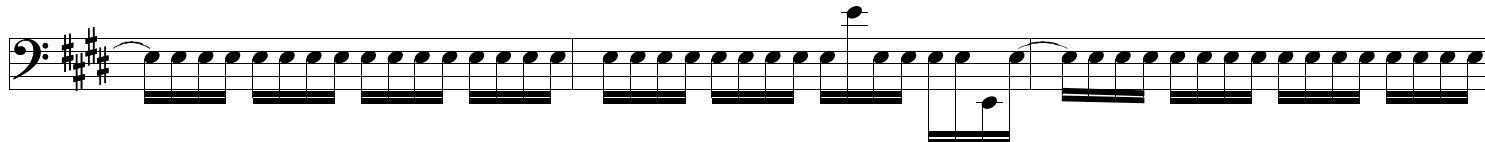
[3]



[4]

[5]

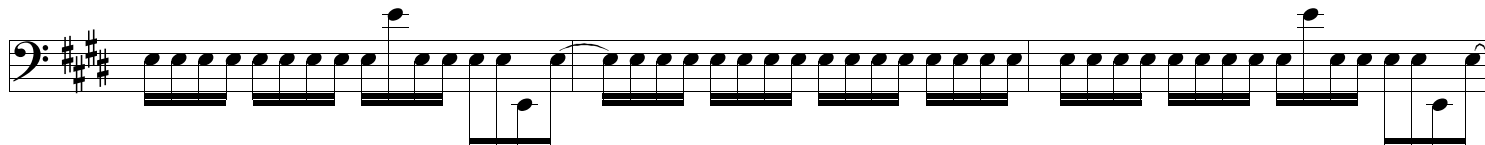
[6]



[7]

[8]

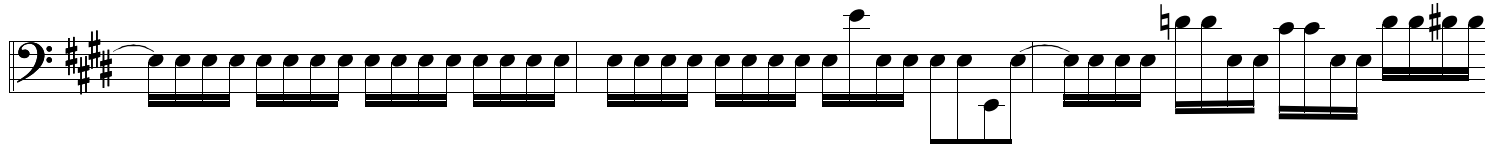
[9]



[10]

[11]

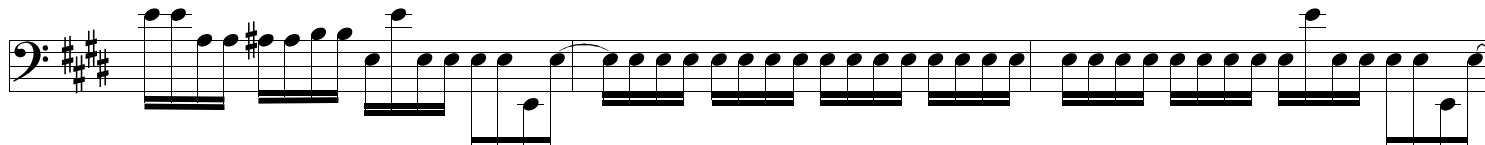
[12]



[13]

[14]

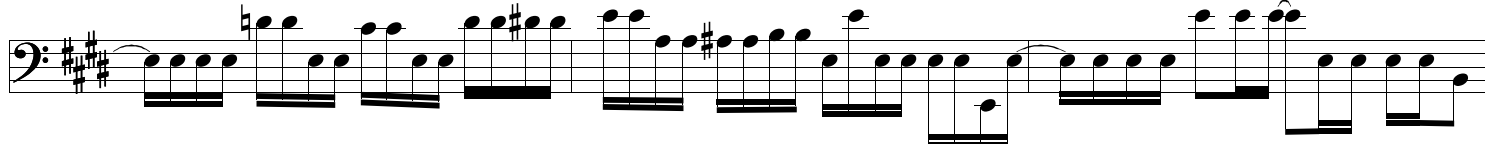
[15]



[16]

[17]

[18]



[19]

[20]

[21]



[22]

[23]

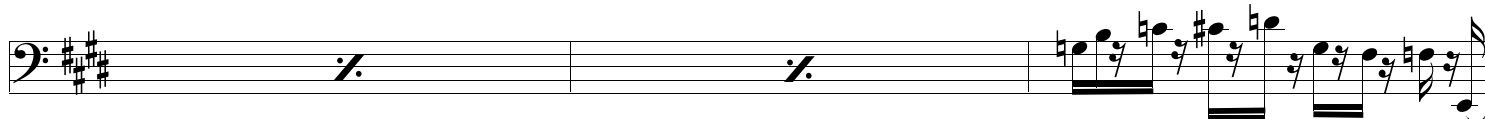
[24]



[25]

[26]

[27]



[28]

[29]

[30]



31 32 33

34 35 36

37 38 39

40 41 42

43 44 45

46 47 48

49 50 51

52 53 54

55 56 57

58 59 60

61 62 63

This image displays a bass sheet music score for measures 31 through 63. The music is written in a single system with a key signature of three sharps (F#, C#, G#) and a common time signature (C). The notation is primarily in bass clef. Measures 31-33 show a steady eighth-note pattern. Measures 34-36 introduce a first ending bracket. Measures 37-39 continue the eighth-note pattern with some melodic variation. Measures 40-42 feature a mix of eighth and sixteenth notes. Measures 43-45 include rests and sixteenth-note patterns. Measures 46-48 show a continuation of the eighth-note pattern. Measures 49-51 feature a mix of eighth and sixteenth notes. Measures 52-54 continue the eighth-note pattern. Measures 55-57 show a mix of eighth and sixteenth notes. Measures 58-60 continue the eighth-note pattern. Measures 61-63 show a mix of eighth and sixteenth notes.

64 65 66 67 68 69 70 71 72 73 74 75 76 77 78 79 80 81 82 83 84 85 86 87 88 89 90 91 92 93 94 95 96

This image displays a bass sheet music score for measures 64 through 96. The music is written in a single system on a five-line staff, with a key signature of three sharps (F#, C#, G#) and a common time signature (C). The notation includes a variety of rhythmic values such as eighth, sixteenth, and thirty-second notes, as well as rests, ties, and slurs. Measure 64 begins with a series of eighth notes. Measures 65-66 continue with similar rhythmic patterns. Measure 67 introduces a triplet of eighth notes. Measures 68-69 feature a series of eighth notes with a tie. Measure 70 shows a series of eighth notes with a tie. Measures 71-72 include a series of eighth notes with a tie. Measure 73 features a series of eighth notes with a tie. Measure 74 shows a series of eighth notes with a tie. Measure 75 includes a series of eighth notes with a tie. Measure 76 features a series of eighth notes with a tie. Measure 77 shows a series of eighth notes with a tie. Measure 78 includes a series of eighth notes with a tie. Measure 79 features a series of eighth notes with a tie. Measure 80 shows a series of eighth notes with a tie. Measure 81 includes a series of eighth notes with a tie. Measure 82 features a series of eighth notes with a tie. Measure 83 shows a series of eighth notes with a tie. Measure 84 includes a series of eighth notes with a tie. Measure 85 features a series of eighth notes with a tie. Measure 86 shows a series of eighth notes with a tie. Measure 87 includes a series of eighth notes with a tie. Measure 88 features a series of eighth notes with a tie. Measure 89 shows a series of eighth notes with a tie. Measure 90 includes a series of eighth notes with a tie. Measure 91 features a series of eighth notes with a tie. Measure 92 shows a series of eighth notes with a tie. Measure 93 includes a series of eighth notes with a tie. Measure 94 features a series of eighth notes with a tie. Measure 95 shows a series of eighth notes with a tie. Measure 96 includes a series of eighth notes with a tie.

97 98 99

100 101 102

103 104 105

106 107 108

109 110 111

112 113 114

115 116 117

118 119 120

121 122 123

124

sl. sl. sl. sl.