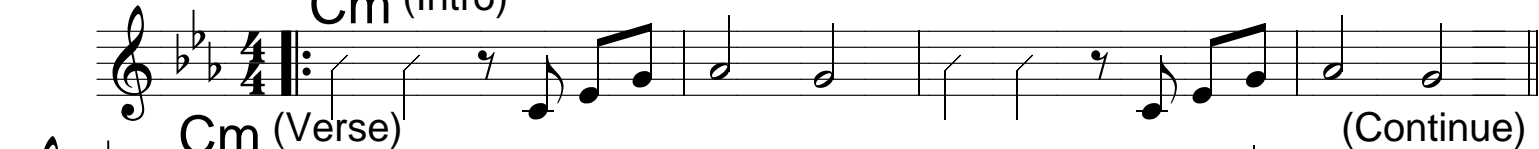


It's My Life

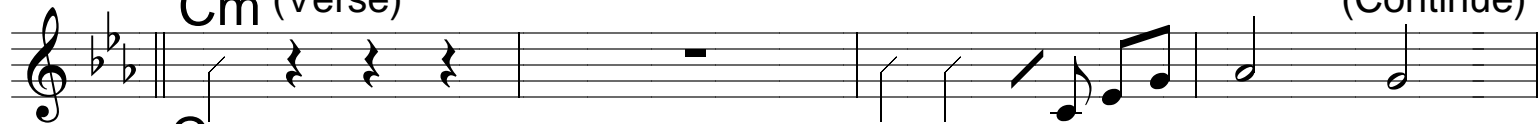
♩ = 120

Cm (Intro)



Cm (Verse)

(Continue)



Cm



Cm

Fm



Cm (Chorus)

A \flat

E \flat

B \flat /D

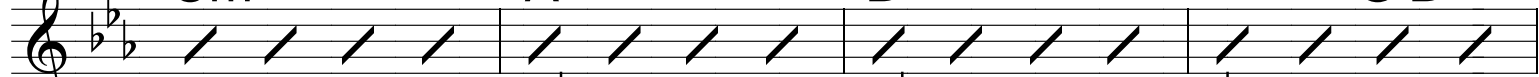


Cm

A \flat

B \flat

G/B

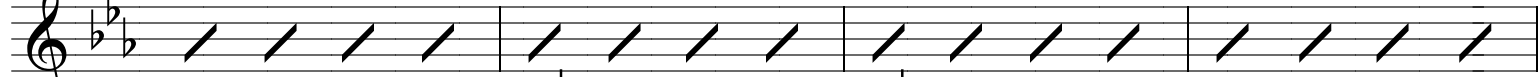


Cm

A \flat

E \flat

B \flat /D



Cm

A \flat

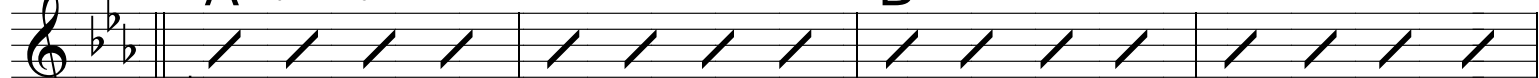
B \flat

G/B



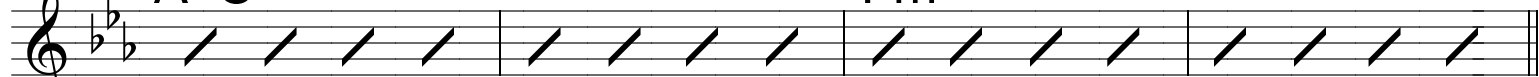
A \flat (Solo)

B \flat

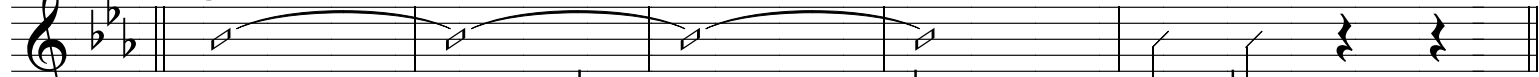


A \flat /C

Fm



Cm (Bridge)

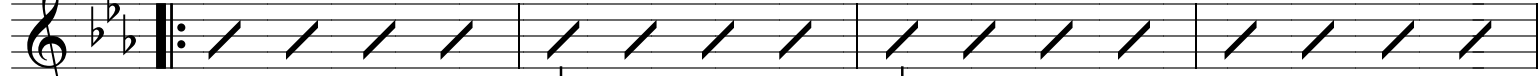


Cm (Chorus)

A \flat

E \flat

B \flat /D

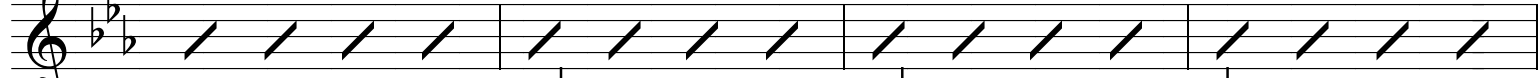


Cm

A \flat

B \flat

G/B

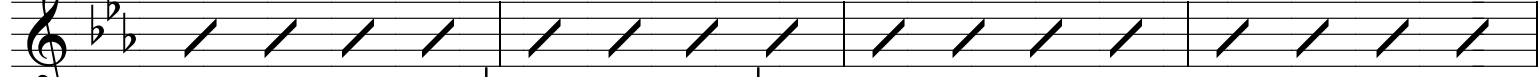


Cm

A \flat

E \flat

B \flat /D



Cm

A \flat

B \flat

G/B

