

UNDER THE BRIDGE

- KIEDIS
FLEA
FRUSCIANTE
SMITH

INTRO

GOITAR:

Handwritten musical notation for the Intro of 'Under the Bridge'. The key signature is D major (two sharps). The notation is on a single staff with a treble clef. It features a series of eighth and sixteenth notes, with some chords indicated by letters: D, F#, D, F#. The piece ends with a double bar line.

VERSE

Handwritten musical notation for the Verse of 'Under the Bridge'. The notation is on a single staff with a treble clef. It features a series of eighth and sixteenth notes, with some chords indicated by letters: E, B, C#m, B, A, E, B, C#m, B, A. The lyrics are written below the notes.

SOMETIMES I FEEL LIKE I DON'T HAVE A PARTNER
I DRIVE ON THE STREETS 'COS SHE'S MY COMPANION
IT'S HARD TO BELIEVE THAT THERE'S NOBODY OUT THERE

SOMETIMES I FEEL LIKE-
I WALK THRU THE HILLS 'COS THAT I'M
IT'S HARD TO BELIEVE THAT I'M

MY ONLY FRIEND IS THE CITY
SHE KNOWS WHO I AM SHE SEES MY AT LEAST
I LIVE IN GOOD DEEDS HAVE HER LOVE

THE CITY AND SHE OF ANGELS
KISSES ME WINDY SHE LOVES ME

LONELY AS I AM TO-GETHER WE CRY
I NEVER WORRIED NOW THAT'S A LIE
LONELY AS I AM TO-GETHER WE CRY

CHORUS

Handwritten musical notation for the Chorus of 'Under the Bridge'. The notation is on a single staff with a treble clef. It features a series of eighth and sixteenth notes, with some chords indicated by letters: F#m, E, B, F#m, F#m, E, B, F#m. The lyrics are written below the notes.

I DONT EVER WANNA FEEL LIKE I DID THAT DAY, TAKE ME TO THE PLACE I LOVE, TAKE ME ALL THE WAY

I DONT EVER WANNA FEEL LIKE I DID THAT DAY, TAKE ME TO THE PLACE I LOVE, TAKE ME ALL THE WAY

E B C#m A E B C#m A

INTERLUDE

REPEAT VERSE AND CHORUS

BRIDGE

Handwritten musical notation for the Bridge of 'Under the Bridge'. The notation is on a single staff with a treble clef. It features a series of eighth and sixteenth notes, with some chords indicated by letters: A, C/G, G6, FA, A, C/G, G6, FA, A, C/G, F/C, E7/B, G. The lyrics are written below the notes.

YEAH, YEAH YEAH, YEAH OH, NO NO NO YEAH, YEAH

LOVE ME, I SAY YEAH, YEAH

CODA



UNDER THE BRIDGE DOWNTOWN _

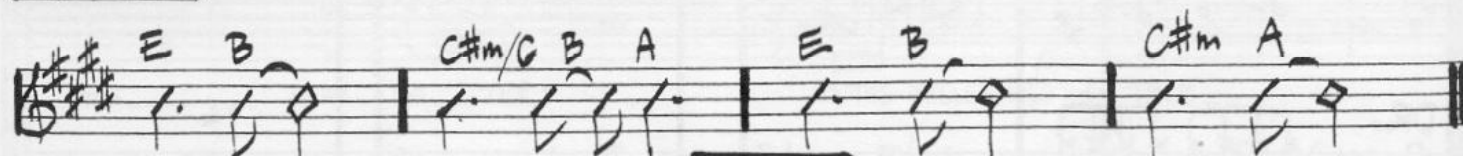
IS WHERE I DREW SOME BLOOD
I COULD NOT GET ENOUGH
FORGOT ABOUT MY LOVE
I GAVE MY LIFE A-WAY
YEAH YEAH

NO NO NO YEAH YEAH
DOWNTOWN, I SAID, YEAH YEAH

(REPEAT CODA 4x WITHOUT VOCALS FOR ENDING)

RHYTHM EXAMPLES

VERSE 1 - GUITAR:



GTR.

CHORUS



BS. E

F#m E

B F#m

DR.

SIMILE

INTERLUDE - VERSE 3



BRIDGE - CHORUS

SIMILE